

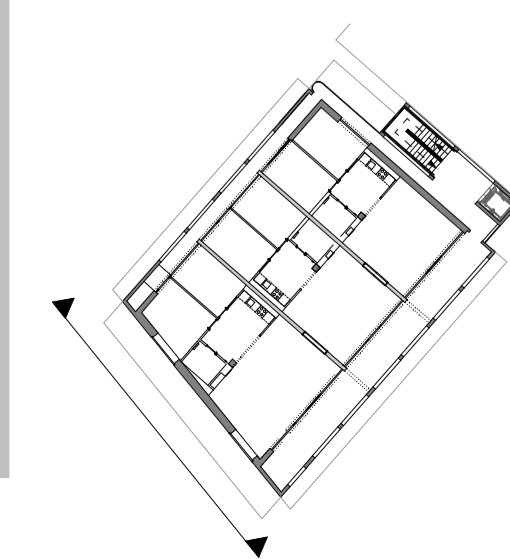
Forrester Apartments

Ann Mews

House of Artists

Courtyard

West Elevation



Notes
Do not scale from this drawing. All dimensions to be verified by the contractor on site.

Key Plan

North Point 1 : 100@A1



10	Drawing updated in line with comments received 07.09.2020	07.09.2020	PM	TB
9	Adjustment to planning drawings highlighted	20.08.2020	PM	TB
8	Drawing updated in line with co-ordination meeting	14.08.2020	PM	TB
7	Updated in line with NIAA comments	03.08.2020	PM	TB
6	Glazing indicated to ground floor	07.07.2020	PM	TB
5	Notes added	04/06/20	PP	TB
4	External fenestrations amended, canopies revised, height of the building reduced	16/10/19	PP	TB
3	Glass door changed on the Ground Floor and canopy changed from concrete to zinc	11/10/19	PP	TB

Rev	Description	Date	Init	Chkd
-----	-------------	------	------	------

Project

House for Artists



Title

Proposed West Elevation-Planning

Client

J Murphy & Sons

Status

Planning

Date

26/09/2019

Drawn By

PP

Checked By

TB

Project No.

K190158

Drawing No.

HFA- CFS- ZZ- ZZ- DR- A-0P304

Revision

10



King's Head House King's Head Yard London SE1 1NA

02079 403200 london@calfordseaden.com calfordseaden.com
calfordseaden LLP is a Limited Liability Partnership Registered in England & Wales number OC315838
LONDON ■ BIRMINGHAM ■ CAMBRIDGE ■ KENT ■ ESSEX ■ HAMPSHIRE